

RONAI



the most comprehensive  
range of uniform solutions  
in the Middle East

bespoke  
by RONAI

uniforms  
by  
RONAI



bespoke design

made-to-measure tailoring

catalogue collections

fit for purpose fabrics

stock supported chefswear

sustainable fabrics & practises

b e s p o k e

by RONAI

r e d e f i n i n g   l u x u r y   h o s p i t a l i t y   f a s h i o n

innovation is key to our bespoke division headed by  
lead designer Avi Muller

Avi and his team have produced exciting and glamorous  
made to measure collections for a host of clients in  
the UAE, Qatar & Saudi Arabia  
including Jumeirah, Four Seasons and the UAE Space Agency



















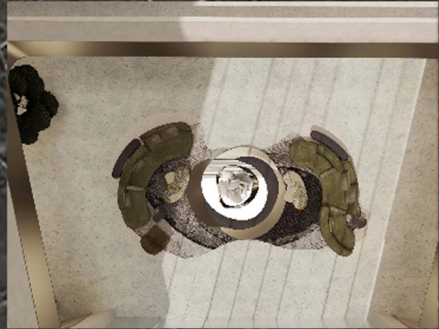








bespoke  
by RONAI



PROJECT: ARRIVAL - DOORMAN, BELLMAN, VALET



bespoke  
by RONAI



Doorman Option 1



Doorman Option 2



Bellman Option 1



Bellman Option 2



Valet



Doorman Option 3

PROJECT: FRONT OFFICE LOOK 1



bespoke  
by RONAI



Male Option 3



Female Option 5



Female Option 6



Male Option 4



Female Option 7



Female Option 8

PROJECT: FRONT OFFICE LOOK 2



bespoke  
by RONAI



Female Option 1



Male Option 1



Male Option 2



Male Option 3



Male Option 4



Female Option 2

PROJECT: F&B MODERN AMERICAN RESTAURANT - LOOK 1



bespoke  
by RONAI



PROJECT: F&B MODERN AMERICAN RESTAURANT - LOOK 2



bespoke  
by RONAI



BOTANICAL ETHNIC RESTAURANT  
KIMPTON RIYADH



PROJECT: F&B BOTANICAL ETHNIC - LOOK 1



bespoke  
by RONAI



BOTANICAL ETHNIC RESTAURANT  
KIMPTON RIYADH



PROJECT: F&B BOTANICAL ETHNIC - LOOK 2



bespoke  
by RONAI



PROJECT: HOUSEKEEPING

uniforms  
by  
RONAI

**b a l a n c i n g   d e s i g n   +   p e r f o r m a n c e**

since its launch in 2011, UNIFORMS BY RONAI, helmed by Creative Director David Sprakes, has become one of the leading suppliers of uniforms & corporatewear to hotels, restaurants, food service operators and the aviation industry across the Middle East

in 2013 the brand released its first chefswear brochure, which, by 2017 had evolved into a full catalogue including the innovative 'builder' sections to include over 200 fabric/color choices and 200+ garment & detail options

























RONAI

*chef*









**chefswear for every kitchen**

chef jackets

trousers

aprons

hats

executive chef jackets

womens chefswear collection

The logo for dnata is centered in a white square. The word "dnata" is written in a blue, lowercase, sans-serif font. The background of the entire image consists of a repeating geometric pattern of blue and green chevrons and triangles, creating a dynamic, angular effect.

dnata





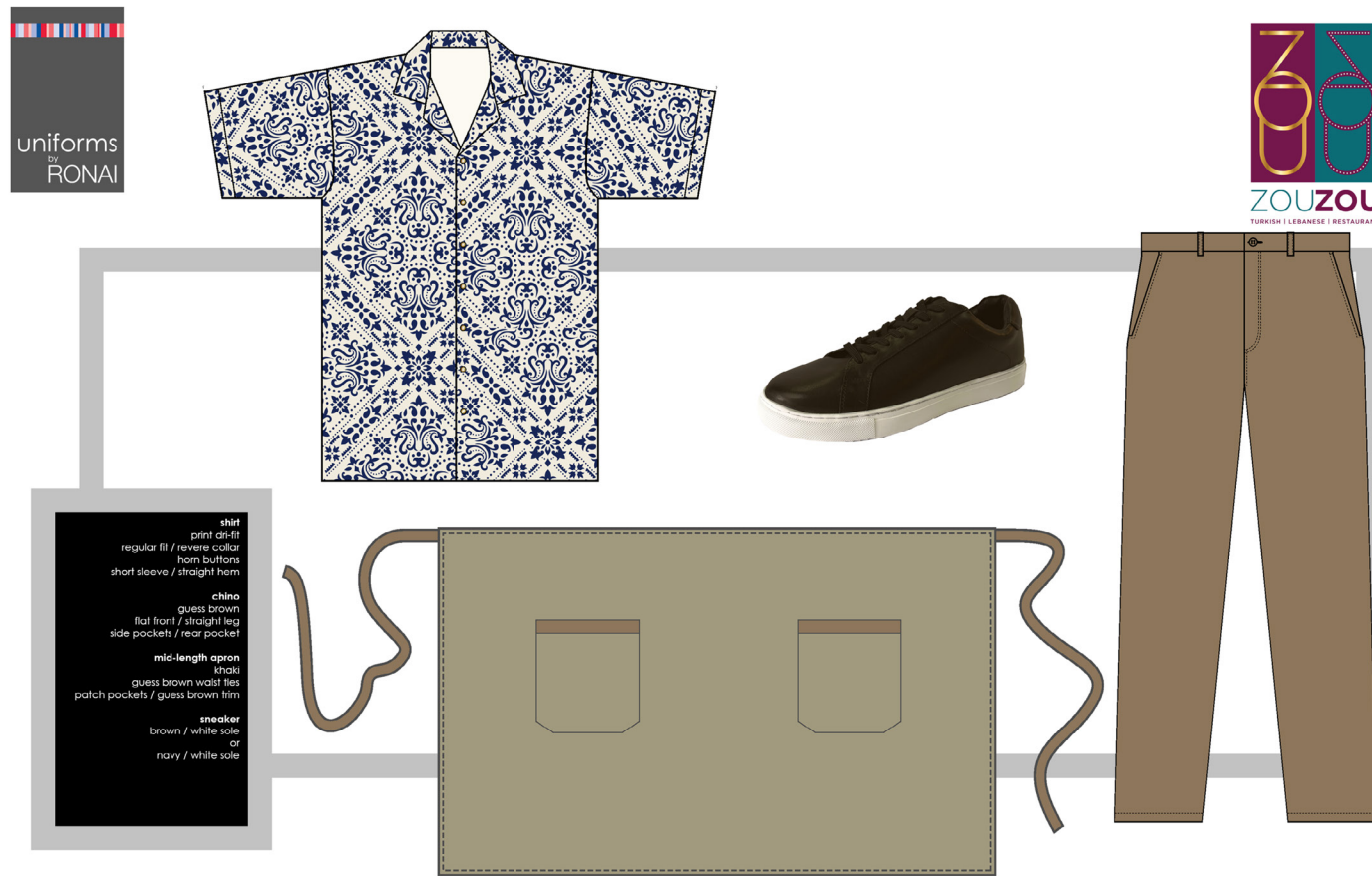
The image features the Flydubai logo centered within a white rectangular frame. The background is a dark blue field filled with a repeating pattern of large circles in orange, light blue, and white. The logo itself consists of the word 'fly' in orange and 'dubai' in dark blue, both in a lowercase, rounded sans-serif typeface. A small orange circle serves as a period at the end of the word 'dubai'.

flydubai.









uniform concepts 2024

waitstaff / c

uniform concepts 2024

bar-barista / c



uniform concepts 2024

head chef / c

uniform concepts 2024

kitchen chef / c

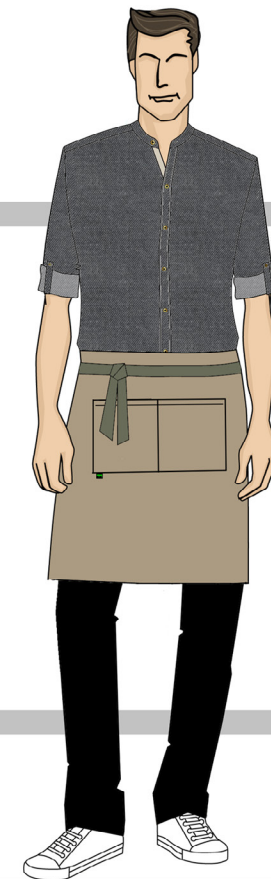




**shirt**  
black stretch denim  
roll-sleeve  
granddad collar  
contrast under placket  
horn buttons  
green contrast detailing

**jeans style trousers**  
black  
straight leg / flat front  
shaped side pockets  
rear patch pocket

**bit apron**  
leather  
contrast neck & waist ties  
antique brass eyelets / pocket  
green bull logo label



**shirt**  
black stretch denim  
roll-sleeve / granddad collar  
contrast under placket  
horn buttons  
green contrast detailing

**jeans style trousers**  
black  
straight leg / flat front  
side pockets / rear pocket

**mid-length apron**  
khaki canvas p/c  
hedgehog waist ties  
antique brass eyelets / pocket  
green bull logo label

uniform concepts 2023

waitstaff

uniform concepts 2023

runner / barista



**male shirt**  
grey & oatmeal oxford  
& white 'dynamic'  
contemporary fit / long sleeve  
classic collar  
grown-on placket / horn buttons  
green contrast detailing  
green bull embroidery on cuff

**male chino trousers**  
black  
straight leg / flat front  
side pockets / rear pocket

**female oversized shirt**  
print  
long sleeve / classic collar  
concealed fastening

**female trousers**  
black  
straight leg / flat front  
side pockets  
waistband tie detail



**chef jacket**  
black  
long shirt style roll-sleeve  
stud fastening cuffs  
sleeve pocket  
concealed fastening  
drift back panel  
wrapover front  
logo embroidery on left chest  
green bull logo embroidery  
on rear collar

uniform concepts 2023

supervisors/hostess

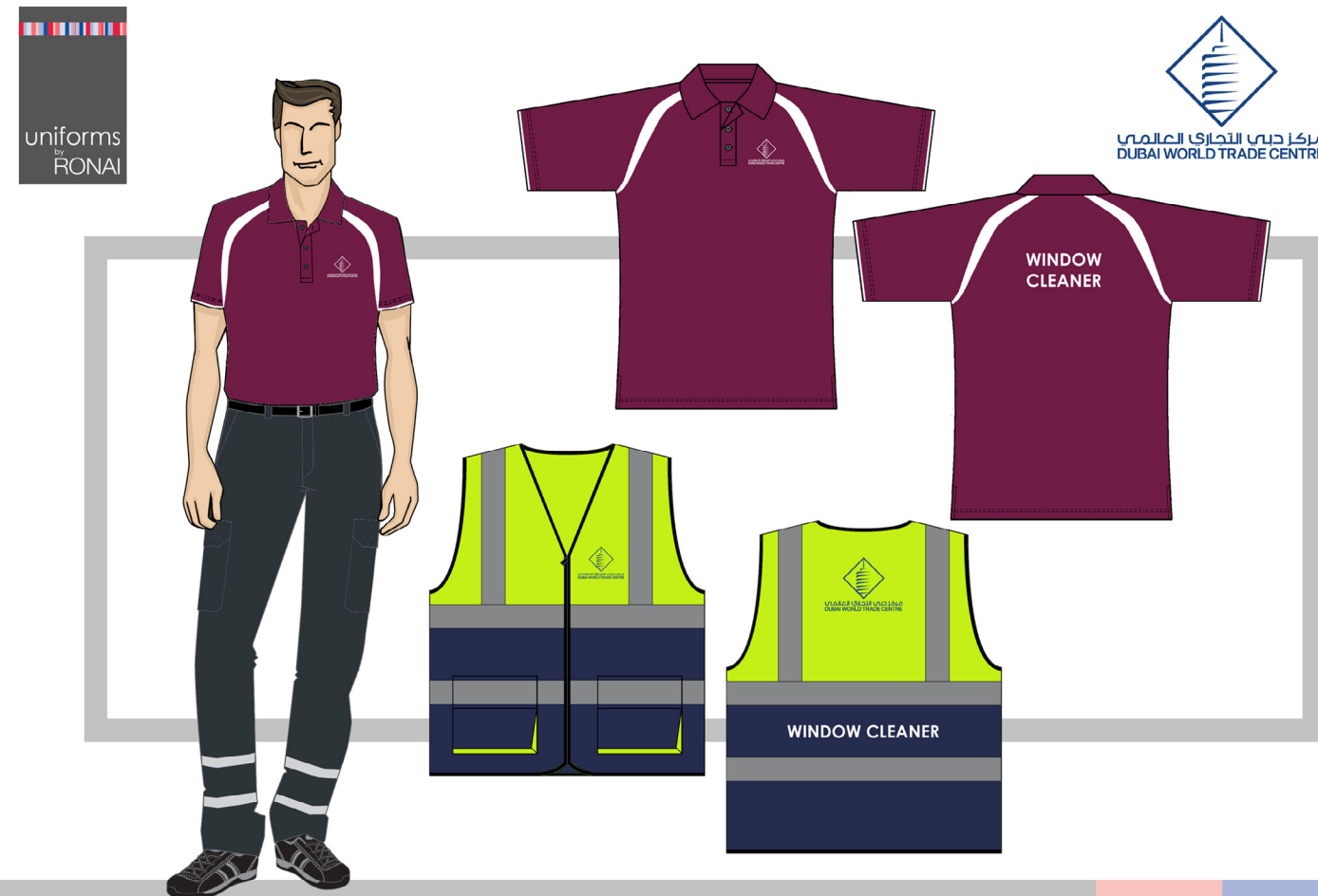
uniform concepts 2023

in-charge/butcher/grills jacket



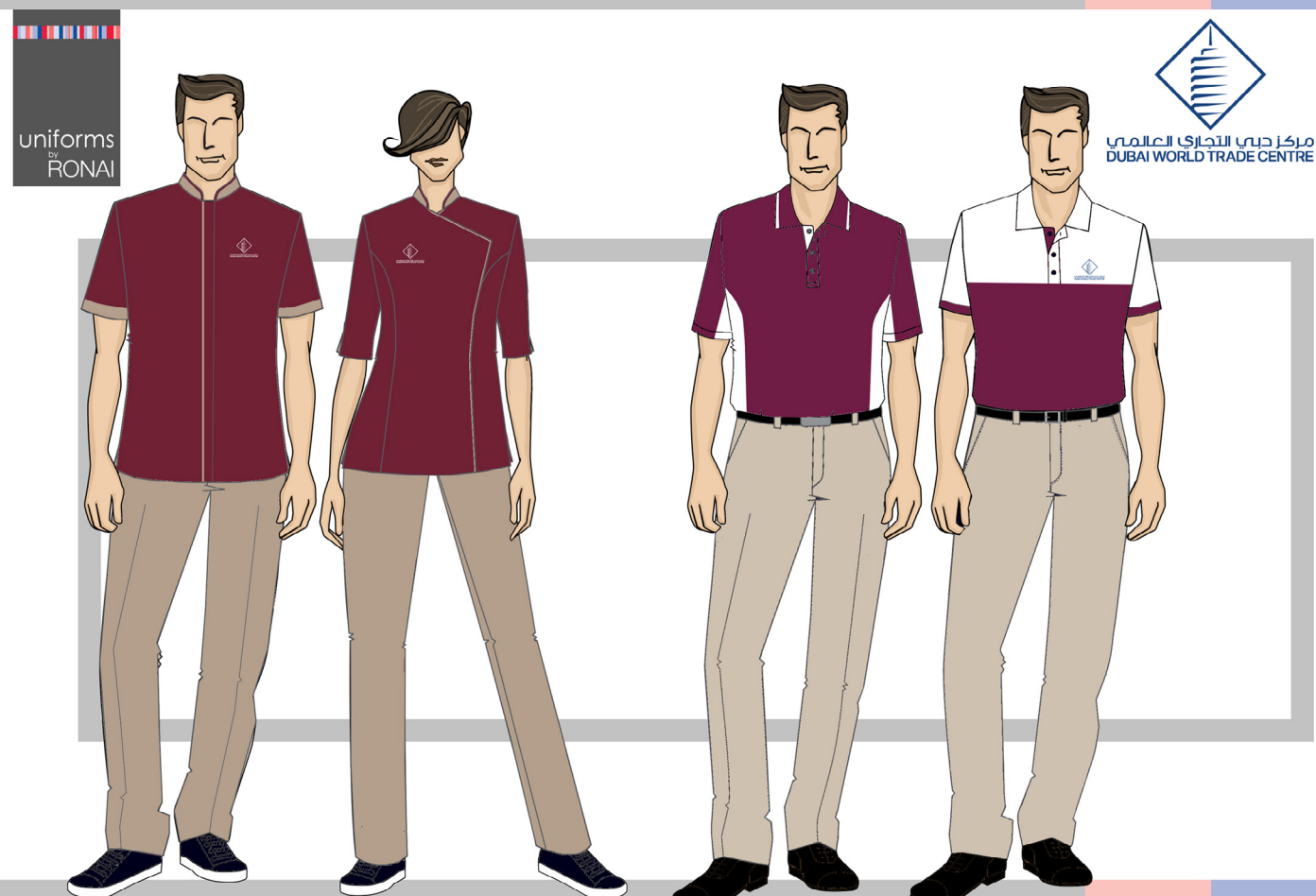


uniform concepts 2024 manager/supervisor/admin

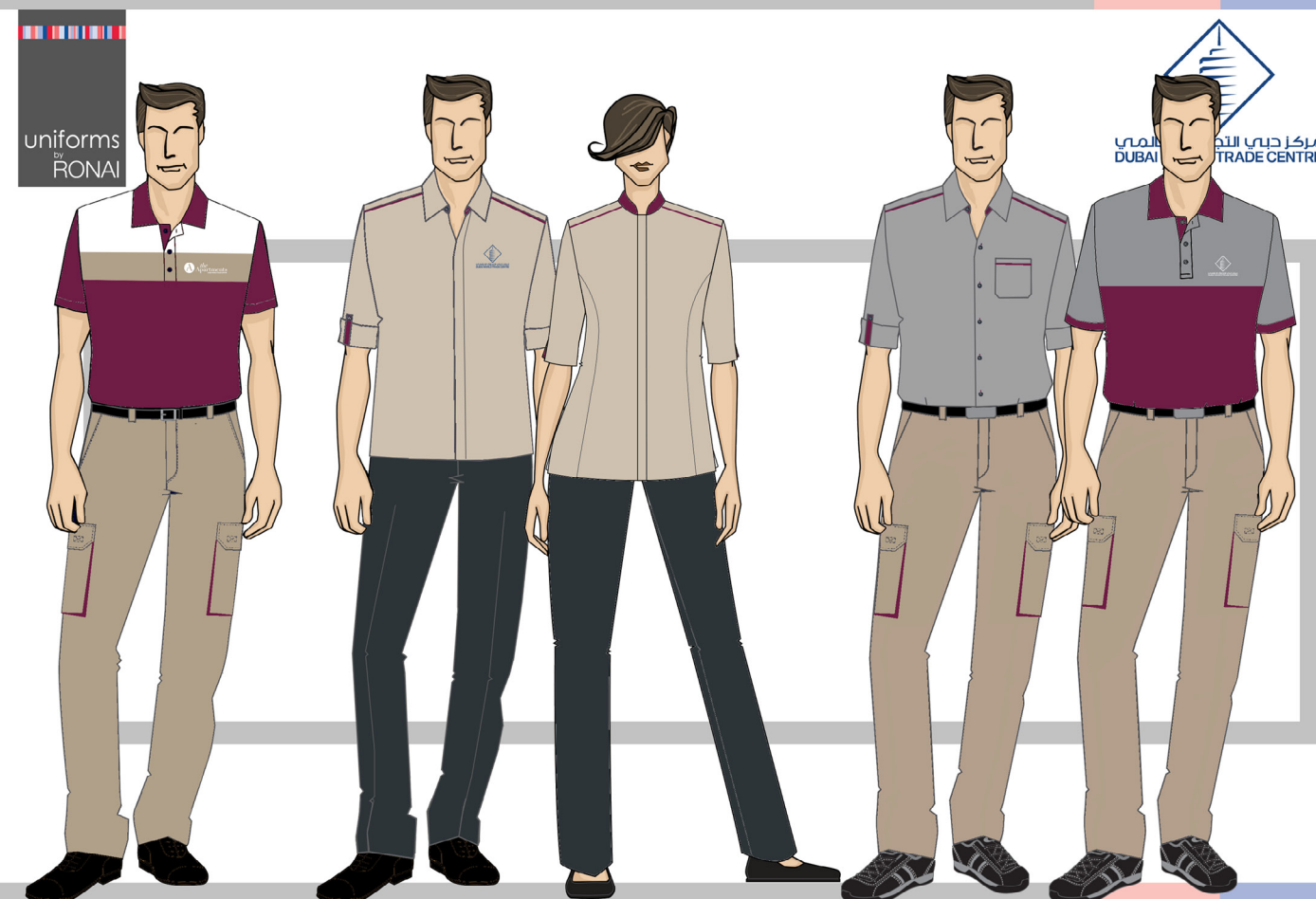


uniform concepts 2024

window cleaner  
external cleaner

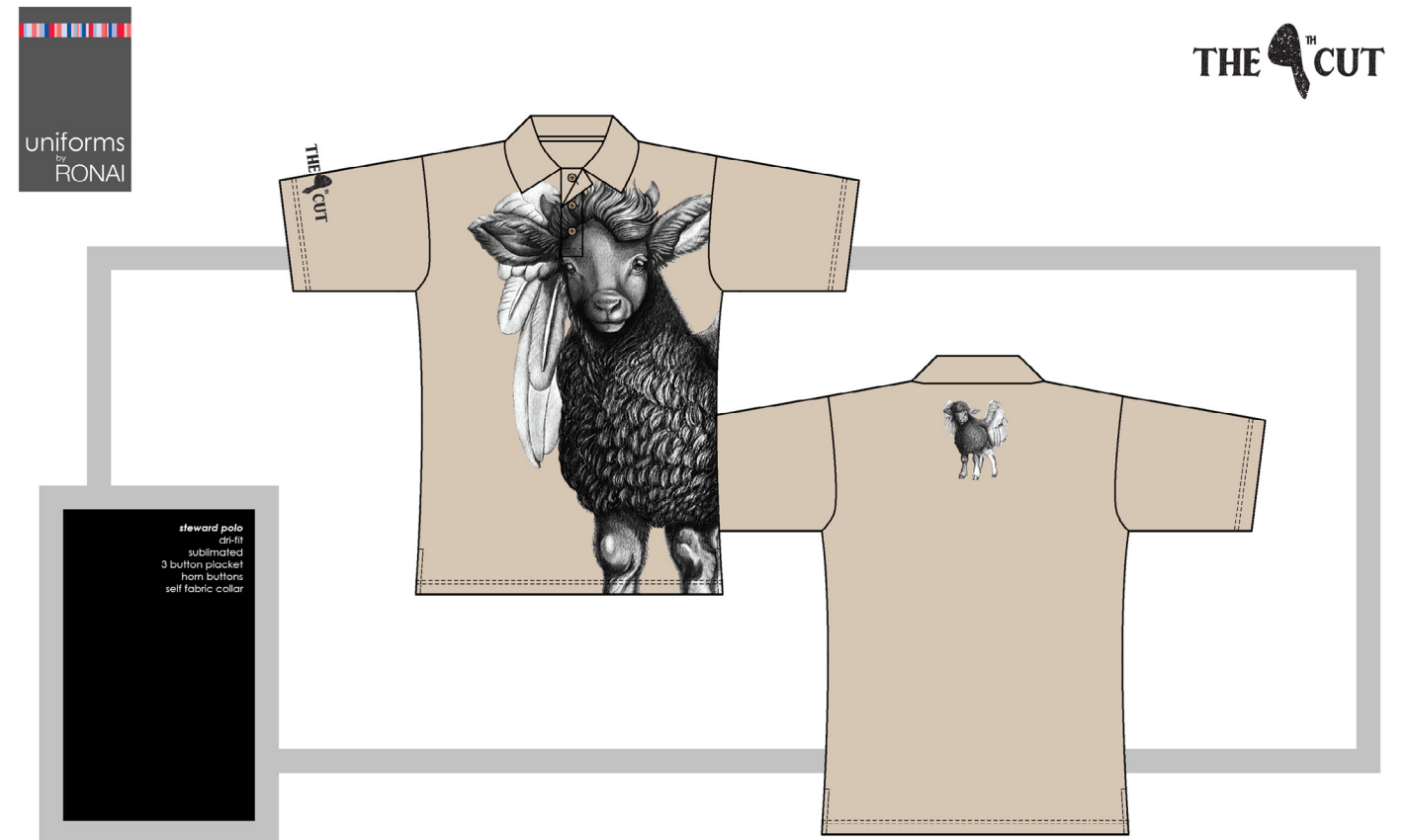
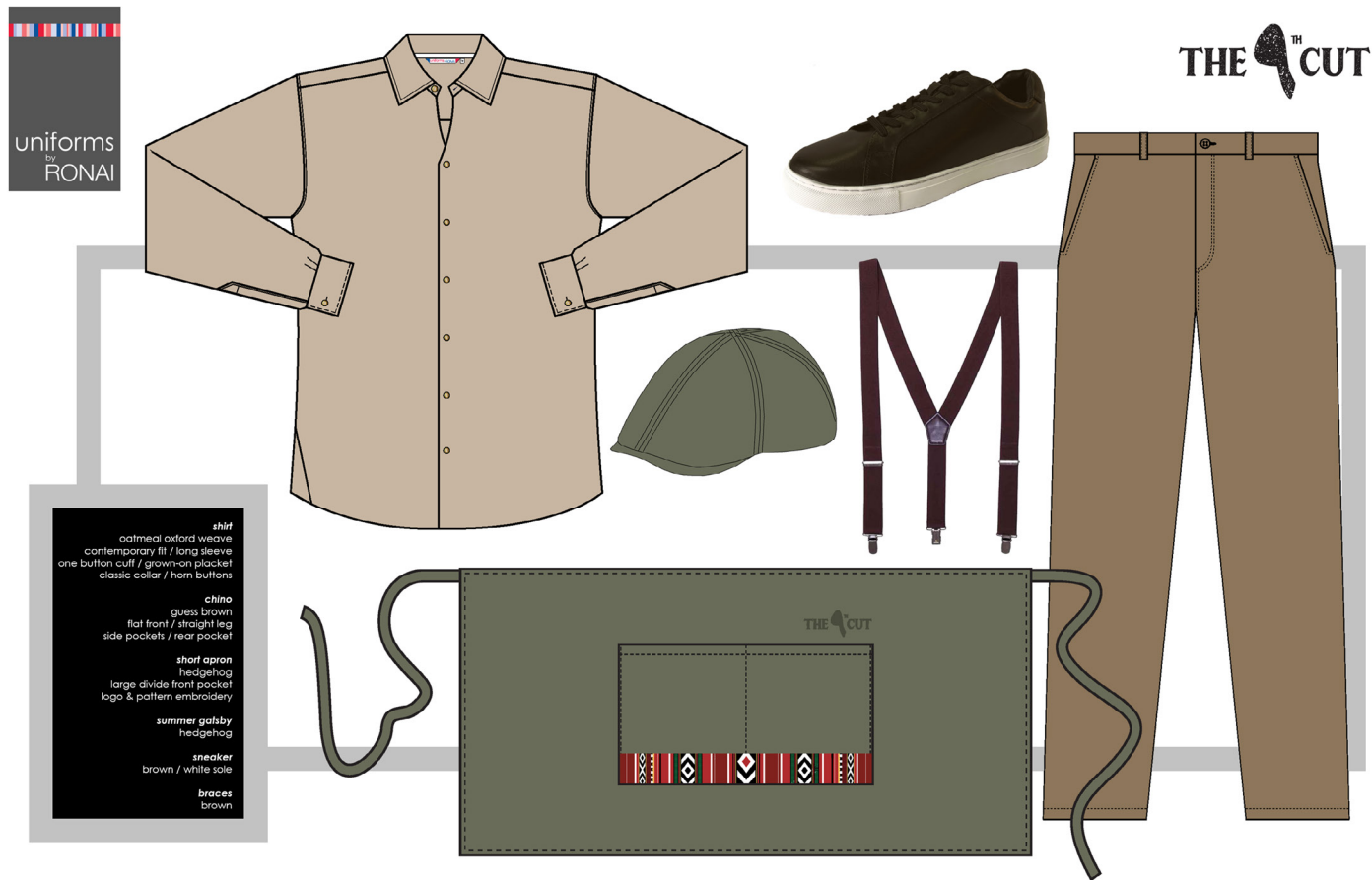


uniform concepts 2024 hk / concourse / linen room



uniform concepts 2024 apartments / shift leader / drivers





uniform concepts 2024

waitstaff / a

uniform concepts 2024

steward polo



uniform concepts 2024

hostess

uniform concepts 2024

chef



RONAI



Ronai is committed to preserving and protecting the environment by minimising the impact of its activities both locally and globally

The leading brands we partner with are chosen based on their sustainability practises & products



# WEAR FABRICS RESPONSIBLY PRODUCED.

THIS IS THE FIRST STEP TO «BE PART OF THE  
CHANGE WE WANT TO SEE IN THE WORLD».

FACING THE REALITY THAT RESOURCES WILL BECOME  
INCREASINGLY SCARCER AND THAT THE POPULATION  
WILL CONTINUE TO GROW, THE TEXTILE INDUSTRY  
MUST FACE THE FACT THAT SOMETHING HAS TO  
CHANGE.





1

At Klopman, we aim to reduce our impact on the environment every day, with **MORE AND MORE EFFICIENT PRODUCTION** systems and by promoting solutions that can truly change the market, step by step. Our R&D departments and our production engineers constantly work towards minimising toxic substances, finding alternatives for existing raw materials, waste reduction, reduction of energy use and employing renewable energies.

#### PRODUCTION EFFICIENCY – LESS WASTE OF RESOURCES

2

We're more committed than ever to **PRODUCING FABRICS THAT LAST**. Designing and producing clothes of higher quality is the first rule that a fabric producer should keep in mind. It's the first and most important way to be sustainable. Extending product lifespans, especially in the workwear industry, is mandatory: the more times a garment can be worn means less production and less consumption.

#### MORE DURABLE FABRICS – LESS PRODUCTION – ENVIRONMENTAL FRIENDLY

3

At Klopman, we believe there is still much we can do. This is why we promote fabrics made with more sustainable material. All our fabrics can be created with **RECYCLED POLYESTER, ORGANIC COTTON, FAIR TRADE COTTON, FIBRES MADE FROM WOOD PULP AND ALL SKIN-FRIENDLY ACCORDING TO OEKO-TEX® CLASS 1**.

Our Greenwear fabrics maintain Klopman's **high quality standards in terms of comfort, image and durability**, while increasing sustainability and respect for the environment.

#### CHOOSE SUSTAINABLE RESOURCES

**OUR MISSION IS TO IMPROVE THE QUALITY OF LIFE AND PROTECTION OF PEOPLE WITH INNOVATIVE SUSTAINABLE FABRICS.**

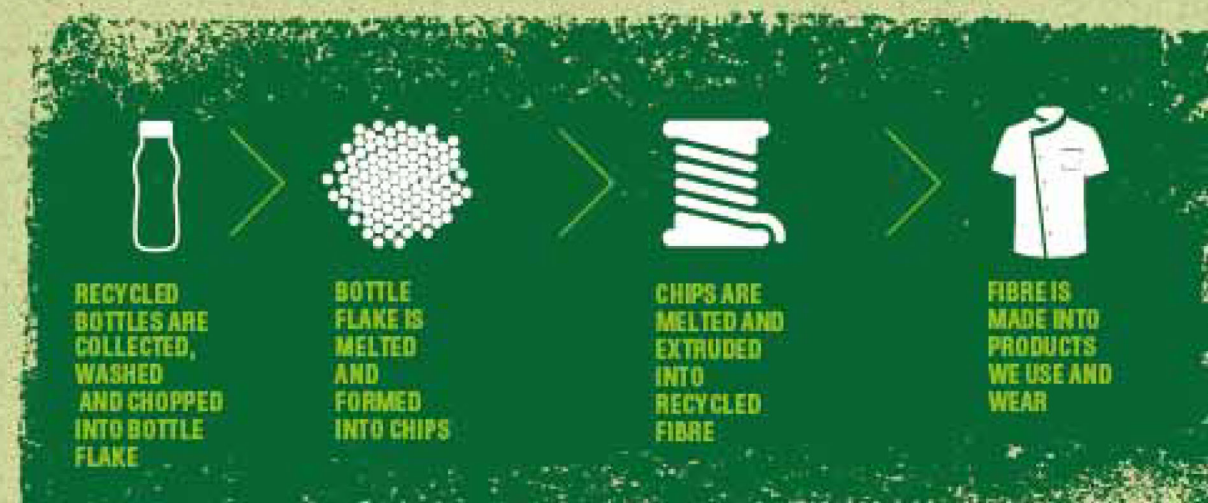


## FABRICS MADE WITH RECYCLED POLYESTER

Polyester is now the largest single fibre group used for workwear and uniforms worldwide. We produce fabrics using **high-quality recycled yarn** made from recycled materials such as plastic bottles.

Using PET clear plastic bottles as the raw material means making ethical, sustainable use of thousands of tonnes of waste plastic which might otherwise end up in landfill. Fabrics made with recycled polyester maintain all the performance characteristics you would expect from Klopman workwear fabrics. They also help us work towards a more sustainable world and demonstrate real respect for our environment.

### THE PROCESS







+971 4341 4409



enquiries@ronai.ae



www.ronai.ae



a.ronai



resource centre